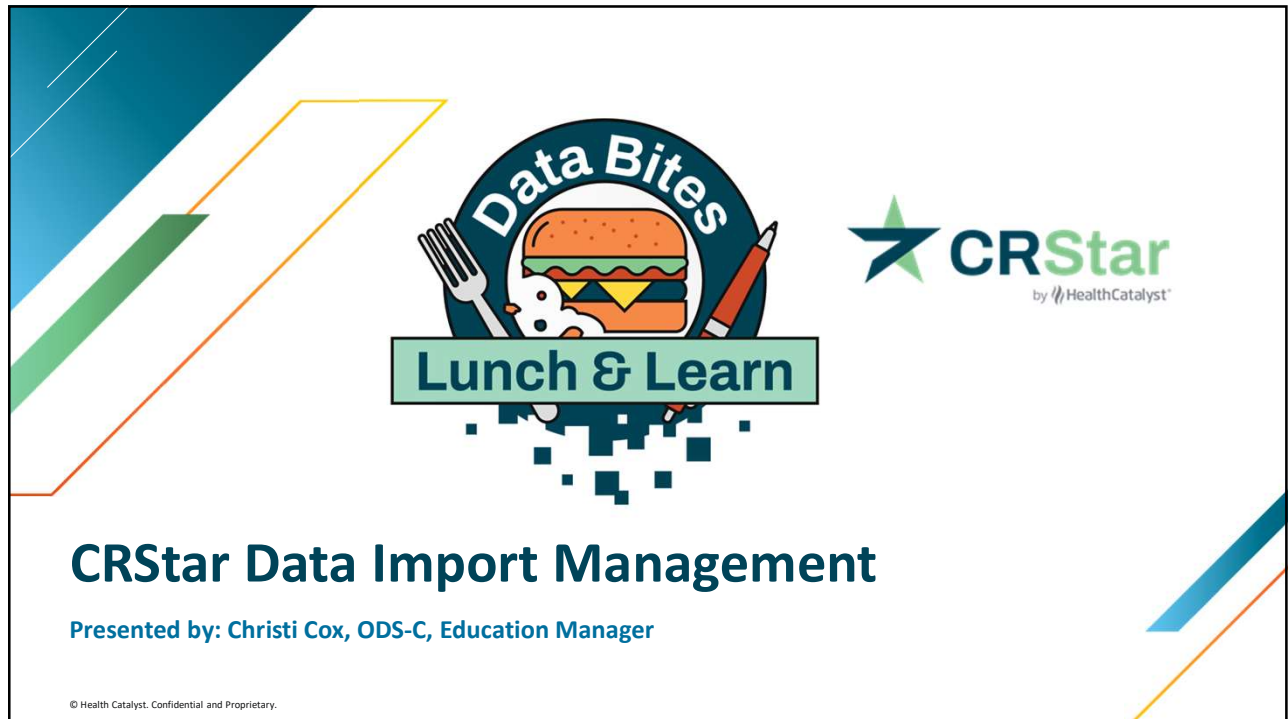




1



2

# Updates and Notices

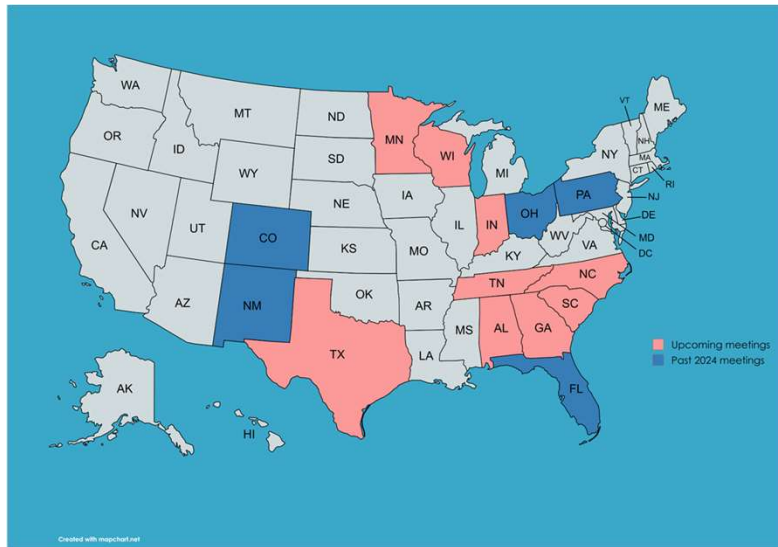
An upgrade to CRStar was loaded on 10/01/2024. Please refer to posted documentation for details.

The image shows the CRStar login page. At the top is the CRStar logo with the tagline 'by HealthCatalyst'. Below the logo are two input fields: 'User ID' and 'Password'. Underneath these fields are three buttons: 'Login', 'Clear', and 'Okta Login'. Below the 'Okta Login' button is a link that says 'Change Your Password'. A red arrow points from a note box below to the 'Okta Login' button.

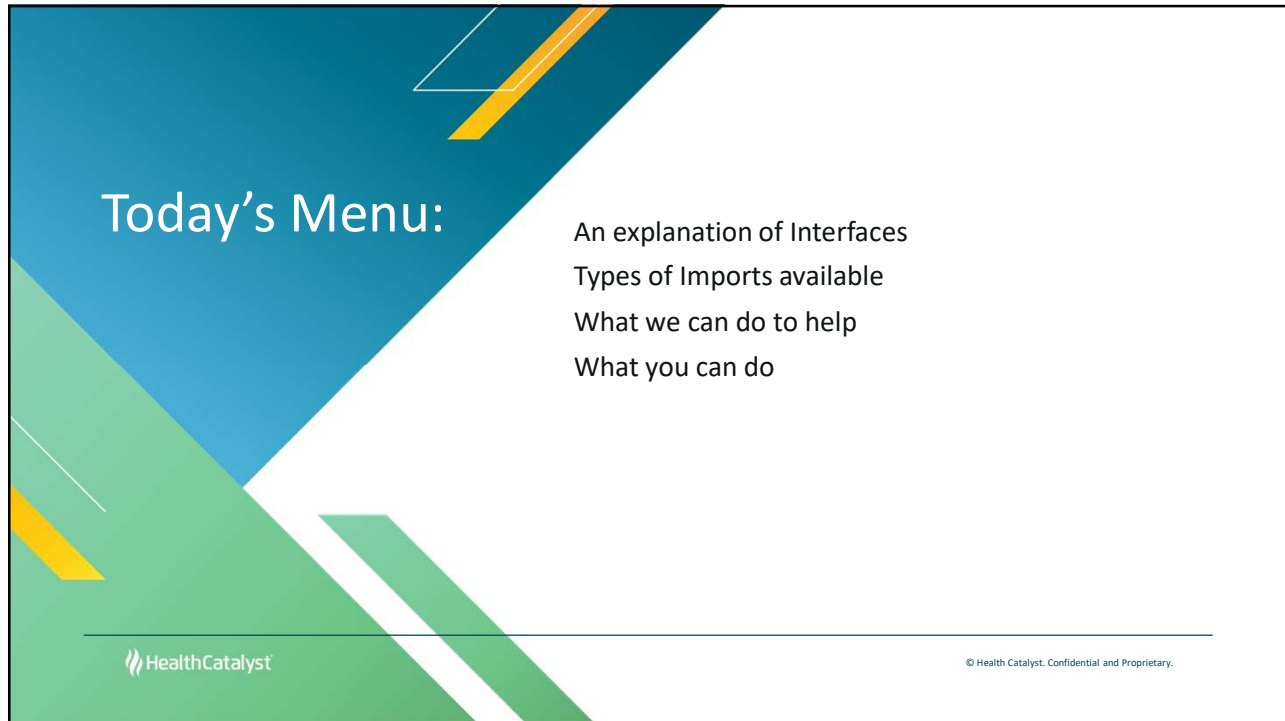
**Note: Use only if Okta has been configured by your health system.**

3

# Its State Association Conference Season!



4



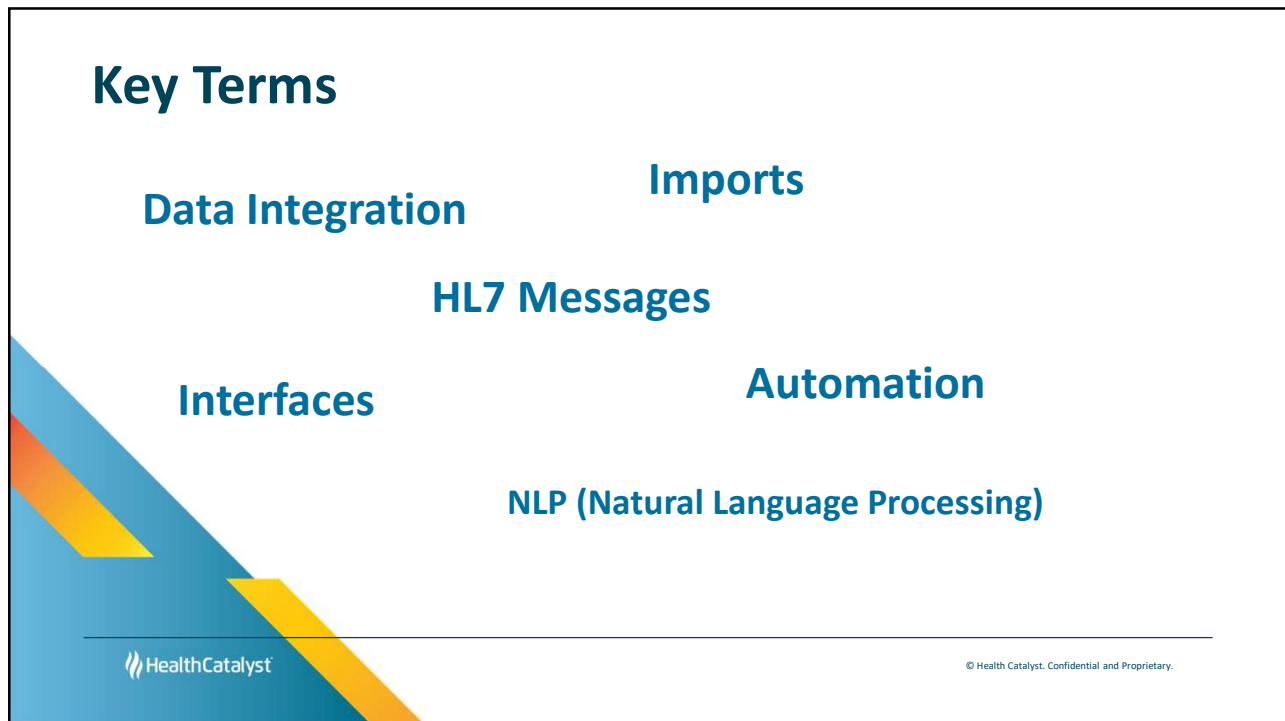
**Today's Menu:**

- An explanation of Interfaces
- Types of Imports available
- What we can do to help
- What you can do

HealthCatalyst

© Health Catalyst. Confidential and Proprietary.

5



**Key Terms**

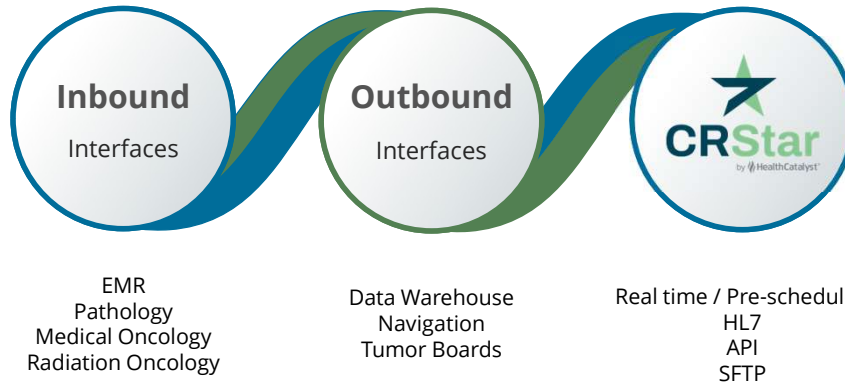
- Data Integration
- Imports
- HL7 Messages
- Interfaces
- Automation
- NLP (Natural Language Processing)

HealthCatalyst

© Health Catalyst. Confidential and Proprietary.

6

## Data Interfaces



7

## Types of Imports

### Casefinding

Usually generated from EMR or Billing  
 Can also come from pathology  
 Generally use ICD-10 codes to assign site codes in CRStar  
 EpicBeaker allows us to map from specimen sources to site code

### Follow-Up

Updates LDC when there is a newer date in the data import  
 New dates will populate a new row in the outcomes grid  
 If D/C disposition is in the data, then pt status can be updated too

8

# What gets imported?

**Following are the Fields Typically Collected for the Casefinding/Follow-Up Import:**


- Facility Code
- Medical Record Number
- Last Name
- First Name
- Middle Name or Initial
- Address
- City
- State
- Zip
- Social Security Number
- Telephone Number
- Admit Date
- Discharge Date
- Date of Birth
- Race
- Sex
- Marital Status
- Discharge Disposition
- ICD-10 Code
- ICD-10 Description

**Narrative Diagnosis Text can include, but not limited to:**

- > Clinical History
- > Nature of Specimen
- > Gross Pathology
- > Final Diagnosis
- > Supplemental Reports and/or Addenda

**Please Note:**

- Although some of the fields listed above are optional, Date of Birth is required and Last Name, First Name, Social Security Number, and an ICD-10 code are highly recommended to



© Health Catalyst. Confidential and Proprietary.

9

# Let's take a look inside





© Health Catalyst. Confidential and Proprietary.

10

## State Death Lists and FU Imports

Most states have some sort of Death List or Follow Back process

They're not all the same

Let us help you import it!

---

 HealthCatalyst © Health Catalyst. Confidential and Proprietary.

11


## Key Take-Aways:

**There are a lot of options for creating and managing imports!**

**We want to help you meet your needs, just let us know what you need!**

**If you need to make changes to your Import Configuration, SUBMIT a ticket!**

---

 HealthCatalyst © Health Catalyst. Confidential and Proprietary.

12



# Questions?

Christi Cox, ODS-C  
[Christi.cox@healthcatalyst.com](mailto:Christi.cox@healthcatalyst.com)

---

 HealthCatalyst

© Health Catalyst. Confidential and Proprietary.